



SOUTH KERRY DEVELOPMENT
PARTNERSHIP LTD

South Kerry Development Partnership Ltd.

Rural Development (LEADER) Programme 2014 - 2020



Comhaltas, Pobal agus Rialtas Áitiúil
Environment, Community and Local Government



The European Agricultural Fund
for Rural Development
Europe investing in rural areas



Coiste Forbartha Pobail
Áitiúil Chiarraí
Kerry Local Community
Development Committee



Introduction to the Programme

LEADER is a Community Led Local Development (CLLD) approach that involves the participation of rural communities in developing responses to the key economic, environmental and social challenges identified in their areas.

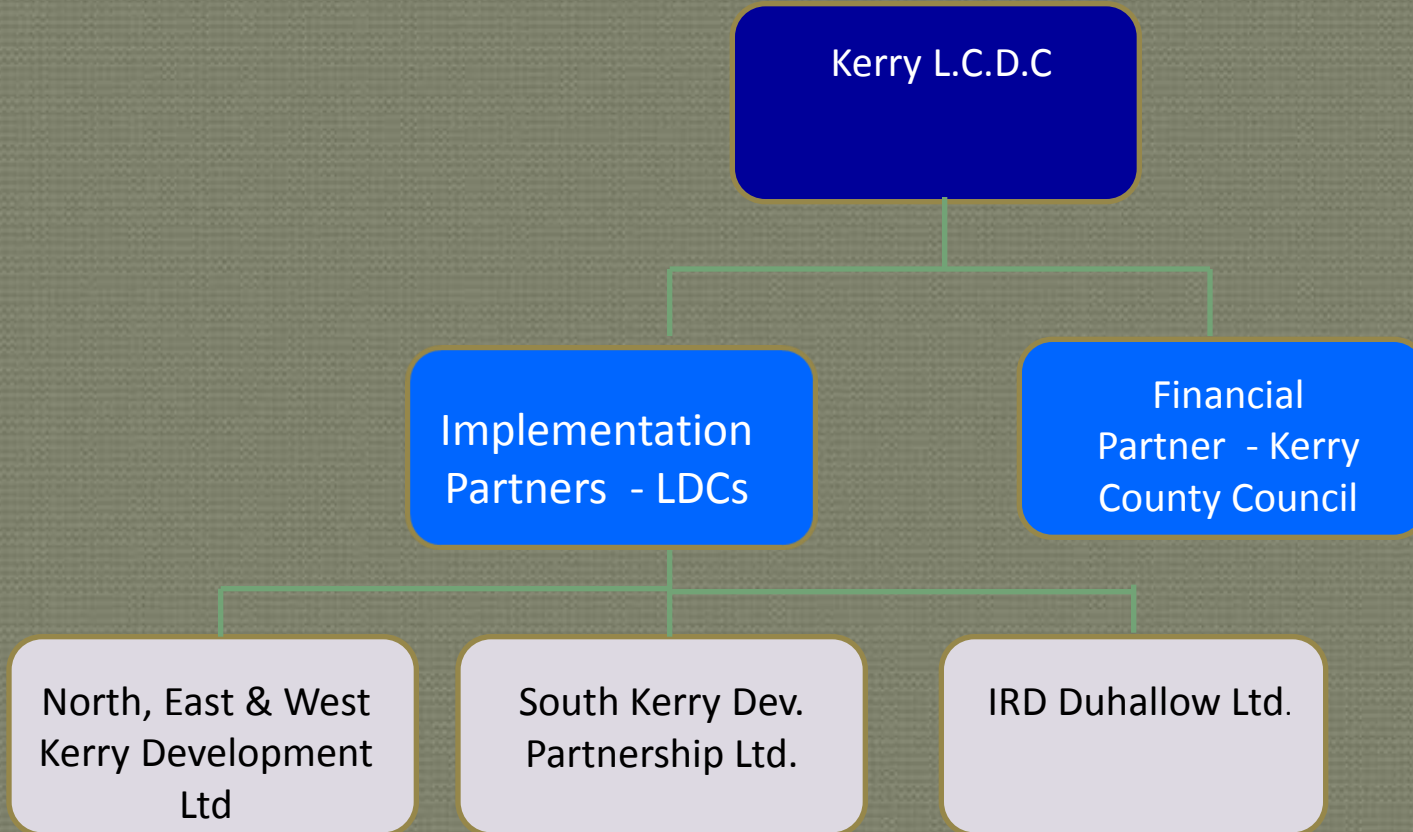
LEADER is underpinned by a framework which requires a Local Development Strategy (LDS) for the delivery of LEADER activities.

The Local Development Strategy is a community-led plan, developed and driven by rural communities through the LAG, to address the needs identified and to achieve a defined set of local objectives.



SOUTH KERRY DEVELOPMENT PARTNERSHIP LTD.

Implementation Framework & Programme Partners

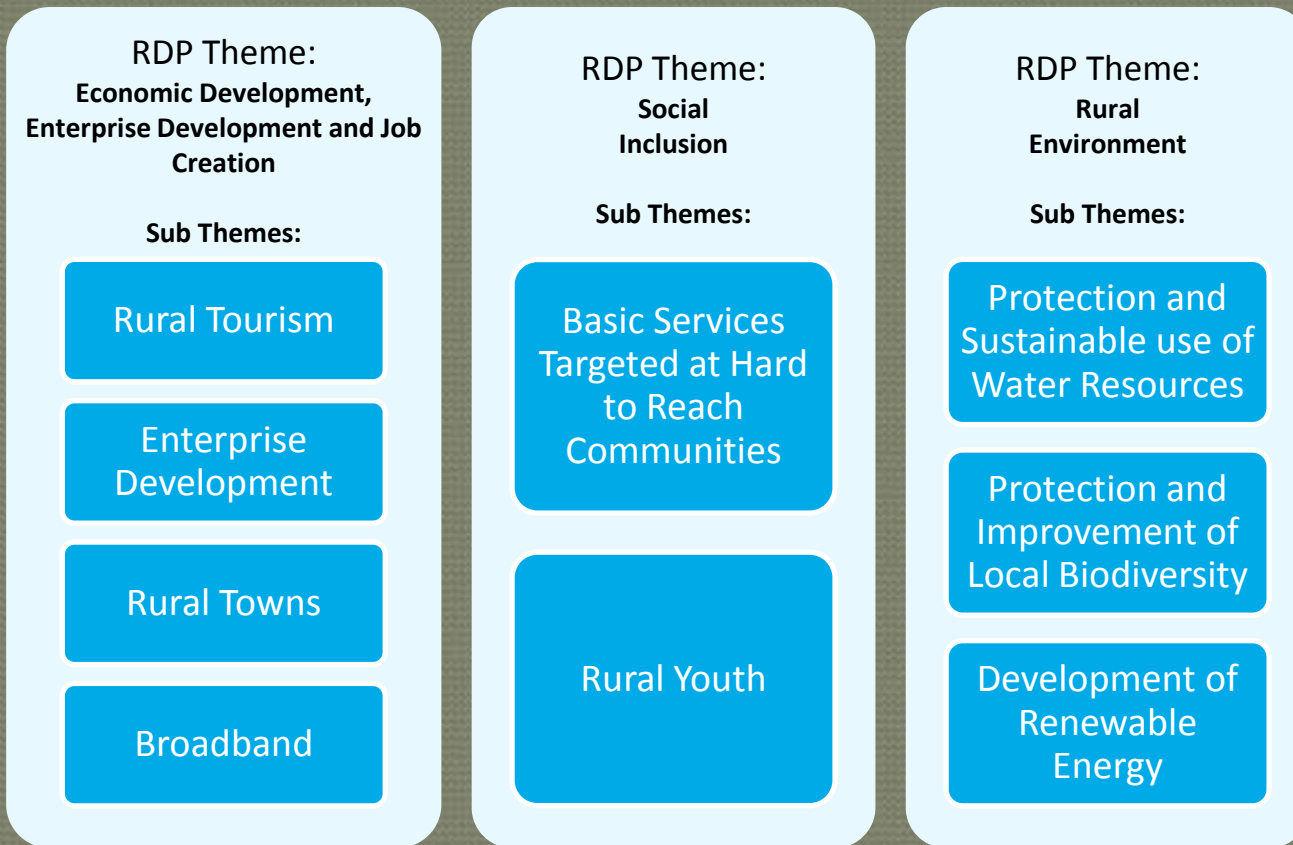




SOUTH KERRY DEVELOPMENT
PARTNERSHIP LTD

Programme Themes & Sub Themes

Rural Development (LEADER) Programme funding for the period 2014 – 2020 will focus on themes and sub thematic areas as follows:





Programme Themes

Theme 1: Economic Development, Enterprise Development and Job Creation

Relates to the challenge of driving continued local economic development, diversification of the rural economy, create employment opportunities for the local community, including those from disadvantaged groups.

Theme 2: Social Inclusion

Relates to fostering social inclusion. As a result of inadequate income and resources, people may be excluded and marginalised from participating in activities which are considered the norm for other people in society. This is compounded by physical isolation, low population density, high levels of out-migration and distance from urban centres.

Theme 3: Rural Environment

Relates to maximising the potential of the environment to contribute to the sustainable development of rural communities. Utilising the landscape, its features and natural resources, while simultaneously creating greater environmental awareness and improving environmental protection.



Programme Sub Themes

Rural Tourism:

Rural tourism provides a stimulus for enterprise and job creation based on a particular asset that is generally place-specific, e.g. landscape and history.

Examples:

- Feasibility studies to explore the tourism potential of an area
- Marketing initiatives and the creation of tourism hubs to facilitate a multi-sectoral approach
- Activities that centre on the development and renovation of infrastructure to historic and heritage-based tourism
- Development of cultural/heritage infrastructure of local significance and arts-based activities and events
- Provision of amenity and leisure facilities can support adventure/eco-based tourism



Programme Sub Themes

Enterprise Development:

Support for micro, small and medium enterprises such as artisan and other food businesses, Renewable Energy, Marine diversification, Social Enterprises, Creative Industries.

Examples:

- Purchase of equipment, refurbishment of enterprise spaces, capital works, specialised training, marketing and branding assistance etc.
- Investment support or sector-specific training programmes for aspiring entrepreneurs, early stage promoters, social enterprises, start-ups and established SMEs
- The development of inclusive models of business support to realise the potential of groups who are underrepresented in enterprise such as women, young people and people with a disability



Programme Sub Themes

Rural Towns:

Supports the regeneration of rural towns by promoting them as attractive places to visit, live and do business.

Examples:

- Town renewal schemes that renovate derelict buildings with incentives to attract business to vacant properties
- Building or refurbishment of community buildings providing a multifunctional infrastructure for social, cultural and sporting activities and training for the local community
- Development and promotion of unique social events and activities, such as farmers' markets, providing an important stimulus to rural towns
- Support for Festivals / Events (marketing, equipment, training etc.)



Programme Sub Themes

Broadband:

Supports for local actions that complement national initiatives aimed at developing a comprehensive rural broadband infrastructure.

Examples:

- Basic ICT training to priority groups, for example, to enable older people and young people to stay connected
- Skills development for installing broadband
- Feasibility studies in relation to community broadband
- Funding for small scale equipment, such as boosters, to allow local businesses access broadband

Note: This sub-theme is not intended to cover broadband infrastructure as this is covered under the National Broadband Plan.



Programme Sub Themes

Provision of Basic Services Targeted at Hard to Reach Communities:

Supports to improve access to basic services for people living in rural and remote areas and groups who are at risk of social exclusion. Actions may involve establishing a new service for communities at risk of social exclusion, or improving existing services provided to communities and community groups.

Examples of basic services include:

- Community facilities
- Education/training
- Social/cultural
- Recreational
- Non-conventional retail



Programme Sub Themes

Rural Youth (defined as people aged 15 – 35 years):

Supports for the promotion of youth entrepreneurship and associated training to provide improved pathways for young people to access economic opportunities in rural areas.

Examples:

- Provision of youth clubs/cafés
- Improved access to ICT
- Sports/recreation activities
- Arts-based projects
- Youth development programmes



Programme Sub Themes

Protection and Sustainable use of Water Resources:

Support towards actions that assist in raising general awareness on water conservation issues, and the development of local water conservation plans and feasibility studies. Capacity building on the technical aspects of water recycling schemes.

Examples:

- Practical initiatives that conserve water, for example, community programmes for rain water harvesting.



Programme Sub Themes

Protection and Improvement of Local Biodiversity:

Support towards actions that promote local biodiversity include awareness raising and practical guidance on how to protect biodiversity domestically. Feasibility studies and action plans may focus on larger scale projects that enhance and protect particular aspects of biodiversity.

Examples:

- Practical initiatives that support biodiversity and environmental improvements, for example, the upgrading of parks and river walks, establishment of nature corridors, habitat creation and planting of native species.



Programme Sub Themes

Development of Renewable Energy:

Actions that may be supported include general awareness raising on environmental issues and feasibility studies relating to green technologies. Capacity building actions may focus on the installation and use of renewable energy technologies.

Examples:

- Technologies that deliver sustainable energy alternatives, for example, biomass heating, solar power, community wind farms and community-based heating systems.



Grant Aid Amounts and Rates

Capital / Equipment

Private Promoter:	50%	Maximum €200,000
Community Promoter:	75%*	Maximum €200,000*

** Increased to €500,000 where no economic activity is carried out*

Training

Private / Community Promoter 100%

Analysis & Development

Private Promoter:	75%	Maximum €30,000
Community Promoter:	90%	Maximum €30,000



Matching & Bridging Finance

Matching Funding – Community Applicants Only

- LEADER Funding can be matched by other public (Non EU) funding
- Must be a minimum of 5% local cash contribution by the applicant
- i.e. Overall level of public funding (incl. LEADER) cannot exceed 95% of the total eligible project costs.

Contributions in Kind – Community Applicants Only

- Contribution in Kind – Acceptable as a source of matching funding
- Contribution in Kind can be in the form of
 - Voluntary Labour
 - Donation/Lease of Land or Buildings

Evidence of Matching & Bridging Finance

- Evidence must be obtained by SKDP prior to the issue of the offer of funding (Contract)



Ineligible Activities

LEADER grant aid cannot be awarded or paid in respect of the following areas:

- Agriculture
- Fisheries
- Conventional retail operations, excluding community based shops and farm shops selling locally produced produce.
- Courses of instruction or training which form the part of normal education programmes or systems at secondary or higher levels. Note: This includes Rural Development diploma and degree.
- Loans
- Working capital (including stock)



Ineligible Activities contd.

- Insurance for project promoters
- Horticultural (including bee-keeping)
- Payments for gifts and donations or personal entertainments (including alcohol)
- Statutory fines and penalties, criminal fines and damages
- Legal expenses in respect of litigation
- Any cost associated with meeting a legislative or statutory requirement
- Reclaimable VAT
- Improvements/refurbishment of private residential property
- Conventional Motor vehicles – including Cars, industrial/farm/construction vehicles, Vans & Buses.
- General maintenance Works of public bodies.
- Projects which are not eligible under the relevant EU regulations
- Projects which already have other European Union funding either directly or through a national programme



SOUTH KERRY DEVELOPMENT
PARTNERSHIP LTD

Targeted Calls for Proposals

The Rural Development (LEADER) Programme 2014 – 2020 will operate on the basis of targeted time bound calls for applications for funding.

Targeted Calls - Process

1. SKDP Call for Expressions of Interest invited on relevant sub-theme areas
2. EOI form issued to all potential applicants by SKDP
3. Expression of Interest forms accepted by SKDP from interested applicants by deadline date.
4. EOIs assessed by SKDP and eligible EOIs identified
5. Those applicants who submitted an eligible EOI will be written to by SKDP and invited to submit a full Application for funding along with the required supporting documentation by deadline date.

N.B – Applications will only be invited from those applicants who have submitted an eligible EOI.

6. Completed applications along with supporting documentation assessed and evaluated by SKDP.



Targeted Calls for Proposals – Cont'd

7. SKDP Evaluation Committee will score project applications and those with the highest score will be recommended for funding
8. SKDP Evaluation Committee recommendations will be reviewed by SKDP Board
9. Project funding recommendations by the SKDP Evaluation Committee will be forwarded to the Kerry L.C.D.C. who will take the final decisions on the projects to be funded.
10. A contract for funding (Letter of Offer) will issue from SKDP for those projects approved for funding by the Kerry LCDC and
11. When the contract is signed by the applicant and returned to SKDP – Project activity can commence
12. Grant can be drawn down when project or project phase is completed – claim documentation is submitted to SKDP
13. Grant will be paid by Kerry County Council



Full Application

Documentation Required for full application.

- Completed signed and dated RDP Application Form
- Recent Bank Statements – Covering a 3 month period.
- Evidence of Bridging & Matching Funding
- Business Plan (Enterprise Application)
- Most recent financial statements/Audited Accounts
- Evidence of Ownership (Title Deeds/Lease) - Capital Projects
- Relevant Quotations/tenders
- Planning Permission/Planning Permission exemption – Capital Projects
- Capital Projects located in an SAC – additional consents required
- Valid Tax Clearance Certificate
- Letter from Revenue confirming non-registration for VAT (Where grant sought includes VAT)
- Memorandum & Articles Of Association/Constitution



Quotations / Tenders

Quotations / Tenders must be obtained for each item of expenditure for which grant aid is sought.

- Up to €5,000.00 – 1 written Quote is sufficient
- €5001.00 – €25,000.00 – 3 written Quotes are required
- Over €25,000 – 5 Quotes Must be obtained or if the applicant is a contracting body - publicly advertised on e-tenders website (public procurement)

Where it is not possible to obtain the requisite number of quotes, written evidence is required to demonstrate that the requisite numbers of quotes were sought.

Public Procurement

Guidelines to be followed in relation to public procurement are available on the e-Tenders website www.etenders.gov.ie and www.procurement.ie



Start Date for Programme in Kerry?

- LEADER Plan for Kerry Approved
- Contracts for funding to be issued by Dept. to LCDCs in July
- Service Level agreements to be agreed & put in place between LCDC and Local Development Companies - July/August
- SKDP likely to be accepting EOI's from potential applicants from **September 1st 2016**
- Timeframe from accepting EOI's to issuing letters of offer (Contracts) to successful applicants likely to be 5/6 months.



SOUTH KERRY DEVELOPMENT
PARTNERSHIP LTD

THANK YOU