



*South Kerry Development Partnership CLG.*

# *PRESENTATION*

*AGM 2018*

*Noel Spillane – C.E.O*



# *South Kerry Development Partnership CLG.*

## ABOUT SKDP

*SKDP is – An integrated local development company which works in partnership with state agencies, the social partners, local elected members and community & voluntary representatives*

*Mission – To promote and assist the development of sustainable, vibrant communities in South Kerry and to improve the quality of life of people living there through the provision of social & economic opportunities*

*Key Objectives – Built around three key pillars, Enterprise & Employment, Education & Training & Community Development*



# *South Kerry Development Partnership CLG.*

## FUNDING PROGRAMMES – 2017/2018

Social Inclusion & Community Activation Programme

Rural Social Scheme

Local Employment Service

Jobs Club

Skillnets

Rural Recreation Officer/Walks Scheme

Rural Development (LEADER) Programme

TUS

Kerry Social Farming

Town & Village Renewal Scheme

E.I.P Funding

## Significant Developments since 2017 AGM

- Rural Development (LEADER) Programme 2014-2020 – Opened in South Kerry in October 2016
- Since October 2017 – Applications accepted for funding on a ‘rolling basis’
- To-date 85 projects awarded funding of just under €2.15 Million



- Funding for a further 12 months secured for Kerry Social Farming – to Oct 2019
- Steady sustained growth of the project
- 19 Host Farms supporting over 30 participants

## Significant Developments since 2017 AGM

- European Innovation Partnership (E.I.P) Funding of €950,000 secured for a designated Agri.-Environment Scheme for farmers/landowners in the MacGillycuddy Reeks.



- Full Tus Programme Quota of 100 participants retained by SKDP following cuts to the programme nationally by D.E.A.S.P in July 2018
- EU Interreg Programme funding of €290,000 secured by SKDP for a Community Renewable Energy Project in Oct 2017
- New Social Inclusion & Community Activation Programme (S.I.C.A.P) 2018 – 2022 secured by SKDP in November 2017



*South Kerry Development Partnership CLG.*

# Enterprise & Employment



*South Kerry Development Partnership CLG.*

Enterprise Supports  
Social Inclusion &  
Community Activation  
Programme



## *South Kerry Development Partnership CLG.*

### • Back to Work Area Enterprise Allowance Scheme – 2017/201

- 122 Individuals progressed into self employment in 2017 through the Back To Work Enterprise Allowance, (B.T.W.E.A.)
- 67 individuals progressed into self employment to date in 2018 (Jan – September 2018 ) through the BTWEA
- 2017 - 360 new clients in total received advice & guidance from the SKDP Enterprise Officers.
- 2018 (Jan – Sep 2018) 180 new clients in total received advice & guidance.
- Close collaboration with Dept. of Social Protection – Local Offices.



# *South Kerry Development Partnership CLG.*

## Capital, Mentoring & Training

- In 2017 - Capital grant assistance provided to 30 enterprises Almost €15,082 paid out.
- To date in 2018 – 21 enterprises have been approved to receive capital grant assistance, with just over €8,225 paid out.
- In 2017 – 88 BTWEA clients received mentoring support
- To date in 2018 – 46 Clients have received mentoring support.
- Start you own Business Courses
  - Five courses run in 2017 - 70 Clients supported .
  - Four courses run to-date in 2018 – 64 clients supported
  - SKDP clients are also referred on SYOB courses organised by the Kerry Local Enterprise Office (LEO)
  - In 2017 - 133 Clients received assistance in accessing Self-employment grants (Enterprise Support Grant) from D.E.A.S.P
  - To-date in 2018 – 93 Clients have been supported.



# *South Kerry Development Partnership CLG.*



## Promotion of Enterprise Supports in 2017/18 including

- Networking Evening held in Killarney during 2018 – approx. 45 clients attended
- Speakers from DSP, SKDP Leader Dept., and Mentors/ BTWEA Participants



# *South Kerry Development Partnership CLG.*

## Employer Liaison Officer Role

- Introduced this role as part of SICAP supports in 2015 – Joanne Griffin
- Works with both employers and those seeking to access employment opportunities – those most distant from the labour market
- 69 Individuals progressed to full/part time employment through the initiative in 2017 .Approximately 21 individuals have progressed to full/part time employment through the initiative to date in 2018
- Over 60 employers across South Kerry engaged



# *South Kerry Development Partnership CLG.*

## Employment Supports South Kerry Local Employment Service



# *South Kerry Development Partnership CLG.*

- South Kerry Local Employment Service Provides
  - Free & confidential services to the unemployed/under-employed
  - Assistance with job-seeking, training and education & information provision
  - Career guidance/mediation support on a client case-load basis
  - Job placement/progression into employment, training or education
  - Provision of mediators fund – a training fund for upskilling /retraining clients of the service.
  - Services to Employers – South Kerry LES has developed an employer engagement strategy



## *South Kerry Development Partnership CLG.*

- Local Employment Service – Placement/Progression 2017
  - In 2017, 629 clients registered with the South Kerry LES
  - Target for South Kerry LES – New Registrations in 2017- 420
  - Placement target for 2017 – 30% into full time employment/Self Employment
  - 326 were direct referrals from DSP and were on Jobs Seekers payments – UA /UB
  - 303 were walk-ins – Lone parents, people with disabilities etc

LES – Job Placement in 2017			
Full Time	Part Time		Total
211	113		324



## *South Kerry Development Partnership CLG.*

- Local Employment Service – Placement/Progression 2018
  - To date in 2018 (Jan – Aug) 577 clients have registered with the South Kerry LES
  - 331 were referred by the Dept. of Employment Affairs and Social Protection.
  - 186 Clients presented voluntary

LES – Job Placement to-date in 2018 (Jan – Aug)			
Full Time	Part Time		Total
175	99		274



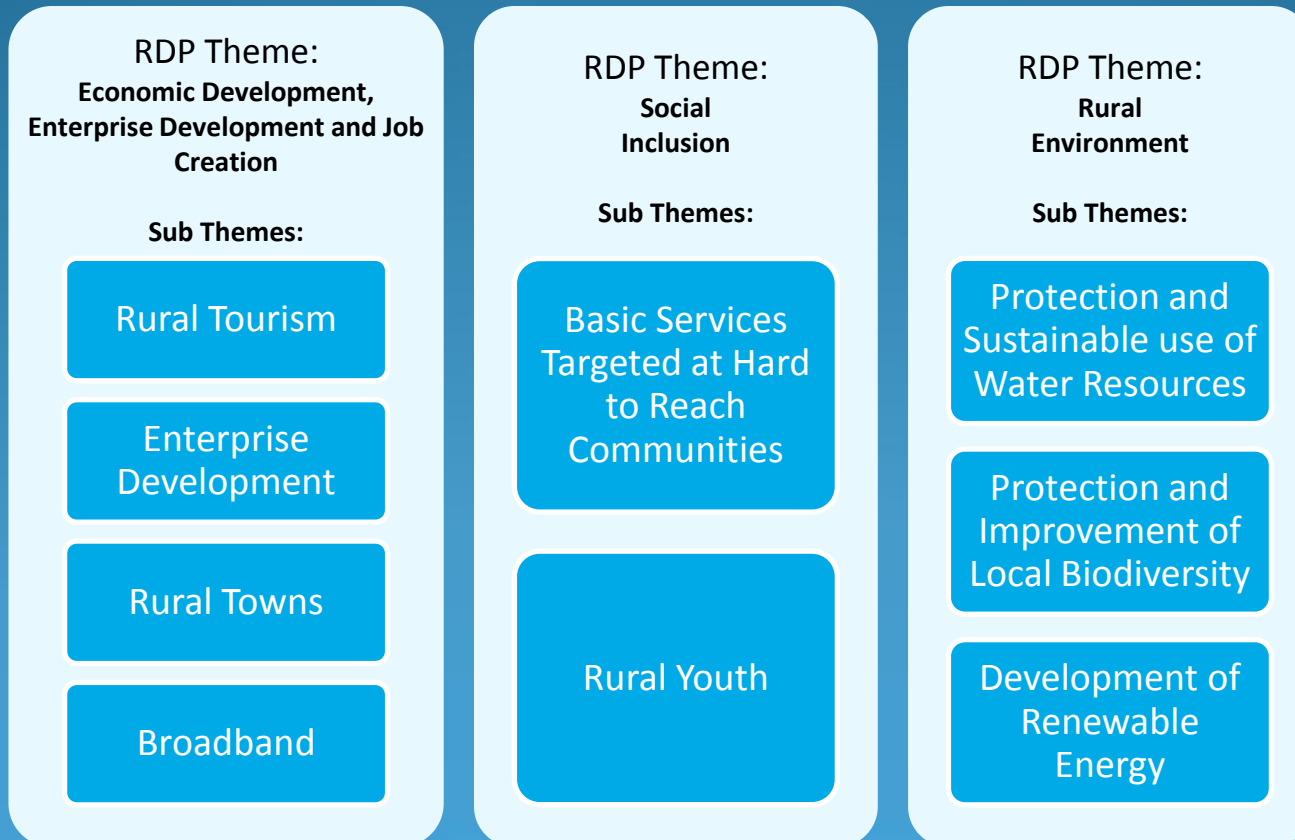
*South Kerry Development Partnership CLG.*

Enterprise Supports - Rural  
Development (LEADER)  
Programme 2014-2020



# *South Kerry Development Partnership CLG.*

- Rural Development (LEADER) Programme – Themes & Sub-Themes
  - Rural Development (LEADER) Programme funding for the period 2014 – 2020 will focus on themes and sub thematic areas as follows





# South Kerry Development Partnership CLG.

## Rural Development (LEADER) Programme 2014-2020

- Economic Development, Enterprise Development & Job Creation
  - Core focus for the funding
- Breakdown of SKDP project budget 2017 – 2020
  - 65% - Economic Development
  - 25% - Social Inclusion
  - 10% - Rural Environment

Theme	2017	2018	2019	2020	Total
Economic Development	€947,253	€710,440	€592,033	€118,407	€2,368,133
Social Inclusion	€374,495	€280,872	€234,060	€46,812	€936,239
Rural Environment	€146,861	€110,146	€91,788	€18,358	€367,152
Total	€1,468,609	€1,101,458	€917,881	€183,577	€3,671,524



# *South Kerry Development Partnership CLG.*

## *Rural Development (LEADER) Programme 2014 -2020*

- SKDP opened the current LEADER Programme in October 2016
- To-date just under €2.15 Million allocated to 85 Projects

<i>Sub Theme</i>	<i>Total Budget</i>	<i>Allocated to Date</i>	<i>Budget Remaining</i>	<i>No Projects</i>	<i>% Allocated</i>
Rural Tourism	€917,881.00	€495,339.71	€422,541.29	26	54%
Enterprise Dev.	€642,517.00	€286,589.17	€355,927.83	12	45%
Rural Towns	€734,305.00	€746,092.54	€6,953.54	28	99%
Broadband	€73,430.00	€7,403.43	€66,026.57	1	10%
Basic Services	€752,662.00	€600,759.03	€152,059.12	16	80%
Youth	€183,576.00	€6,942.75	€176,633.25	1	4%
Water	€91,788.00	€0.00	€91,788.00	0	0%
Biodiversity	€146,861.00	€3,549.68	€143,311.32	1	2%
Renewable Energy	€128,503.00	€0.00	€128,503.00	0	0%
<b>Totals</b>	<b>€3,671,523.00</b>	<b>€2,146,676.31</b>	<b>€1,543,743.92</b>	<b>85</b>	<b>58%</b>



# South Kerry Development Partnership CLG.

## Example of Rural Enterprise Supported

POC Engineering Ltd - Caherisveen.

*Purchase of Plasma Steel Cutting Machine*

Total Project Cost: €102,287.00 Grant Aid: €51,143.50





## **Rural Development (LEADER) Programme 2014-2020**

- Economic Development & Enterprise Supports Available
  - Grant aid of up to 50% - Max of €200,000 – For Micro, Small & Medium Enterprises - Enterprise Space, Equipment, Marketing & Promotion Costs, Branding
  - Training - Grant Rates up to 100% - Max €200,00
  - Feasibility Studies, development of prototype products - Grant rates up to 75% to a maximum of €30,000
  - Town renewal schemes that renovate derelict buildings with incentives to attract business to vacant properties
  - Support for Festivals / Events (marketing, equipment, training etc..)
  - Broadband



# *South Kerry Development Partnership CLG.*

## **Rural Development (LEADER) Programme 2014-2020**

- Since October 2017 - SKDP are accepting applications for funding on a rolling-basis
- Four public Information meetings held in September 2018



Killarney – Sept 19<sup>th</sup>

Killorglin – Sept 20<sup>th</sup>

Cahersiveen – Sept 24<sup>th</sup>

Kenmare – Sept 27<sup>th</sup>



# South Kerry Development Partnership CLG.



## Rural Recreation Officer/The Walks Scheme



Rural  
Recreation  
Officer



[WWW.MACGILLYCUDDYREEKSKERRY.COM](http://WWW.MACGILLYCUDDYREEKSKERRY.COM)

## The Walks Scheme – Rural Recreation Officer

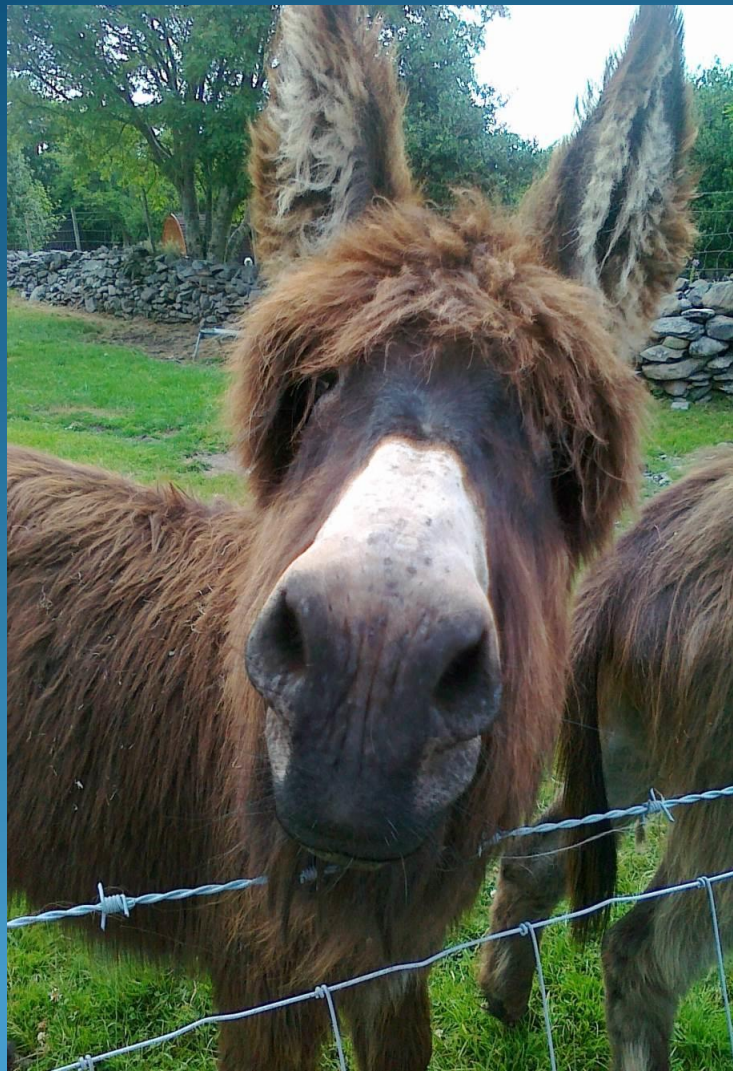
- Participant landowners / landusers = 295 in 2018.
- €301,598.85 in walks scheme payments will be made in 2018 approx.





# South Kerry Development Partnership CLG.

## Update 2017/2018



- The Caher Marsh Loop Walk in Keel-inspection completed by Sport Ireland Trails-scored 100%.
- Top of Coom Loop Walk developed-inspected by Sport Ireland-to launch soon.
- Three pilot blueways (Derrynane, Ballinskelligs & Knightstown)-mapboards finalised and ordered.
- 10 applications for Outdoor Recreation Infrastructure Scheme 2018 submitted- All awarded funding. Total €101,570
- Doorus Point Walk in Lauragh currently being finalised.



- Mountain Access - MacGillycuddy Reeks
- REDZ Funding** - work continued on Strickeen lower to repair the track under this funding .
- Further training was carried out on 'light touch works' in the upper Hags Glen, with trainers from Scotland.
- Continued development of Friends of Reeks, website and building social media presence.
- Application made in conjunction with KCC for further funding to complete Upper Strickeen track.





# *South Kerry Development Partnership CLG.*

## Update 2017/2018

### Locally-led agri environmental scheme

SKDP were successful in their bid for European Innovation Partnership Locally Led Scheme funding, and will receive €950,000 to roll out the scheme which will concentrate on improving the condition of the habitats in the Reeks in close partnership with the landowners.

Pilot 4 Year Agri-Environment Scheme  
open to farmers/landowners in the  
Reeks

Operational Group established by SKDP  
to oversee implementation of the scheme  
expertise





# Education & Training



## Education & Training - Local Employment Service



# *South Kerry Development Partnership CLG.*

- Local Employment Service – Placement/Progression 2017
  - In 2017 – South Kerry LES progressed 201 clients into education & training programmes

LES Progression - Training & Education 2017			
Labour Market Programmes	Industry Specific	Other Training	Total
82	63	56	201

- In 2018 (Jan-Aug) - 266 clients progressed into education & training programmes

LES Progression - Training & Education 2018			
Labour Market Programmes	Industry Specific	Other Training	Total
128	68	70	266

## Client Analysis Jan – Aug 2018

- Labour Market programmes are up year on year – TUS, Community Employment & RSS. LES have more people accessing these programmes in 2018 than in 2017
- More clients presenting are long-term unemployed and are not ready for full-time work. Labour Market Programmes are the best way forward in securing sustainable full-time work.
- A lot of upskilling is required for the clients as they have been out of the Labour Market for some time, in some cases over 10 years.
- Majority of clients are over 35 and 50/50 between male & female



# *South Kerry Development Partnership Ltd.*

- Local Employment Service – Education & Training 2017
- Mediators Fund 2017
  - Spend - January - December 2017 - just under €29,998.2
  - Number of clients supported under this fund: 153
  - Types of course/training funded:
    - Safe Pass Ticket
    - CSCS Articulated Dumper Ticket
    - CPC Course
    - Safety/Security Training
    - Driving Lessons – Car, Bus, Artic, Rigid
    - Train the Trainer
    - ITEC Certificate in Personal Training
    - BIM Radio Operator Course
    - HACCP Training Course



# *South Kerry Development Partnership CLG.*

- Local Employment Service – Education & Training 2018
- Mediators Fund Jan – Aug 2018
  - Spend - January – Aug 2018 - €26,822
  - Number of clients supported under this fund: 102
  - Types of course/training funded:

- |  |
|--|
| ➤ Driving Lessons – Car /Truck/ Bus      |
| ➤ Health Care Skills & Communication     |
| ➤ Safe Pass / HACCP/ BIM Safety Training |
| ➤ Animal Grooming                        |
| ➤ CPC Course                             |
| ➤ Legal Practises & Procedures           |
| ➤ Train the Trainer Course               |
| ➤ Healthcare Support Course              |
| ➤ Special Needs Assistant Course         |
| ➤ Beauty Therapy Course                  |
| ➤ CSCS Telescopic Handler                |
| ➤ Manual Handling Course                 |
| ➤ PSA Licence                            |
| ➤ Site Dumper Ticket                     |
| ➤ ADR – Hazchem Licence                  |
| ➤ CSCS Telescopic Handler Ticket         |
| ➤ Teleporter Ticket                      |



# *South Kerry Development Partnership CLG.*

## Education & Training - South Kerry Jobs Club



## *South Kerry Development Partnership CLG.*

- South Kerry Jobs Club provides the following supports
  - Developing clients job seeking skills & techniques
  - Developing an individual job search plan
  - Preparation of clients for interviews
  - Exploring & analysing local work opportunities
  - Providing access to the facilities of the Jobs Club (Telephones, email, newspapers etc.)
  - Provision of formal Jobs Club training
  - Provision of a one to one support service for clients
- South Kerry Jobs Club held 11 formal training sessions in 2017, 5 in Killarney, 2 in Killorglin, Kenmare and Cahersiveen, 1 in Barraduff



# South Kerry Development Partnership CLG.

- South Kerry Jobs Club Performance 2017
  - SKDP Jobs club registered 525 clients in 2017.
  - 942 people accessed the Jobs Club services in 2017
  - 138 did formal Jobs Club Training in 2017
  - 133 clients were progressed into employment

SKDP Jobs Club 2017 - Performance Summary			
Total 2016 Daily Activity	Jobs Club Registrations	Jobs Club Trainees	Progressions – Job Placement
942	525	138	133



# *South Kerry Development Partnership CLG.*

- South Kerry Jobs Club Performance 2018
  - SKDP Jobs club registered 425 clients - (Jan – Aug 2018)
  - 615 people accessed the Jobs Club services for the period Jan - Aug 2018
  - 109 did formal Jobs Club Training for the period Jan – Aug 2018.
  - 95 clients were progressed into employment

## **SKDP Jobs Club 2018 - Performance Summary (Jan – Aug 2018)**

<b>Total Daily Activity</b>	<b>Jobs Club Registrations</b>	<b>Jobs Club Trainees</b>	<b>Job Placement</b>
<b>615</b>	425	109	95



# *South Kerry Development Partnership CLG.*

## Education & Training– South Kerry Skillnet



## *South Kerry Development Partnership CLG.*



Developing Kerry's workforce  
through training, networking and  
encouraging lifelong learning



# *South Kerry Development Partnership CLG.*

- South Kerry Skillnets
  - Enterprise Led training network
  - Presents businesses, their management & staff with a greater opportunity to improve their skills by availing of top class training & support services aimed at:
    - Increasing Performance, Competiveness & Profitability
    - Promoting & Protecting Employment in the Region
  - It supports the training of people at all levels of the business including owner/managers, staff & workers
  - Is open to all types of business regardless of size or industry sector
  - Is very supportive of Small Businesses



# *South Kerry Development Partnership CLG.*

- The benefits of South Kerry Skillnets
  - Top Quality Training Programmes based on the actual needs of business, in the area delivered by experienced practitioners
  - Up to 20-25% funding of training costs provided
  - Support for in-house training requirements
  - Training delivered locally throughout the area- minimising cost and disruption
  - Networking with other businesses to acquire knowledge, solve common problems, promote your business



# South Kerry Development Partnership CLG.

South Kerry Skillnet 2017	Performance Summary 2017		
Category	Target	Achieved	%
Members Companies	129	153	119%
Employed Trainees	878	662	75%
Unemployed Trainees	139	66	47%
Training days	4,147	2,754	66%

South Kerry Skillnet 2018	Performance Summary To-date 2018		
Category	Target	Achieved	%
Members Companies	130	136	105%
Employed Trainees	790	533	67%
Unemployed Trainees	38	15	39%
Training days	3,708	2,137	57%

## South Kerry Skillnet – Upcoming Courses

South Kerry Skillnet are hosting the following

- Effective 1:1 Meetings – 01st September
- Hairdressing Perfect your Blow dry – 24th September
- Presentation Skills – 25th September
- Excel Intermediate – 30th September
- Hairdressing Up-Styling – 5th November
- Employment Law & People Management 13th November
- Hospitality F&B Skills – Various
- DIY AI – 10th November





Education & Training–  
Social Inclusion &  
Community Activation  
Programme



# *South Kerry Development Partnership CLG.*

## • Mental Health & Wellbeing

- 44 individuals supported up to September 2018, annual target 59
- “Steps to Success” delivered in Milltown & Killorglin, 25 participants
- Peer mentor supports provided to 2 South Kerry groups, Kenmare & Cahersiveen.
- 14 Week Strengthening Families Programme co-ordinated by the Education Officer for 12 families from South Kerry. Ongoing supports being delivered through activity camps, information sessions & parents supports.
- CBT, Art Therapy, 1 to 1 Counselling & play Therapy provided for SICAP clients including those at risk of early school leaving.
- 12 activities planned for Kerry’s first Health & Wellbeing Week – please take a brochure!





# South Kerry Development Partnership CLG.

## • Special Needs Education & Disabilities

- Very successful Disability Fair held in January 2018 with over 30 stands and over 500 attendees. Another being planned for **January 30<sup>th</sup> 2019**.
- Action for Young People & Kenmare Special Needs Groups supported to provide activities during Easter and Summer Holidays. 41 young people attended.
- 213 parents & teachers attended 5 weeks of training delivered in Killorglin by Middletown Autism on supporting adolescents.
- Education Officer sits on St. John of Gods Human Rights Committee & CYPSC Progression Pathways sub-group to support work plans.

**FREE EVENT**

- Have you additional Support Needs?
- Are you 16yrs or over and looking to progress to further

**COME JOIN US**

**THE MANOR WEST HOTEL**

30th January 2018 from: 1.30pm to 7pm

**Stands on the day include:**

- Kerry Education & Training Board
- IT, Tralee - Disability Support Services
- National Learning Network
- Career Guidance
- ASPECT
- INSPIRE
- KETB - Training Centre
- + MANY MORE

Email: [patodonovan@newkd.ie](mailto:patodonovan@newkd.ie) | [www.newkd.net](http://www.newkd.net)

This event has been organised by: CYPSC, NEWKD, SKDP, IT TRALEE, Employability Service Kerry, National Learning Network, Department of Employment Affairs and Social Protection.





# *South Kerry Development Partnership CLG.*

## • Supporting Families Supporting Education

- Annual target of 30 surpassed by May 2018 with 44 SICAP clients supported.
- **Managing adolescent stress & anxiety** information talks delivered to parents in 4 South Kerry schools up to June 2018 with 196 parents and 25 teachers in attendance.
- 4 Homework Support Initiatives supported for young people at risk of early school leaving.
- Transfer Programmes provided to 3 Primary Schools with high numbers of children at risk of not transferring.
- 16 Educational Psychological Assessments provided and follow up supports put in place for at risk children.
- Yellow Flag diversity Programme delivered to parents, students & staff at St. Brigids School Killarney.
- 21 children from Bansa Estate supported to access breakfast club & transport to School, attendance and school achievement greatly improved.

Overall education target of 99 surpassed and currently 121 supported

All 13 target groups supported, increased interventions.



*South Kerry Development Partnership CLG.*

# Community Development



*South Kerry Development Partnership CLG.*

# Rural Social Scheme & Tus



# *South Kerry Development Partnership CLG.*

- Rural Social Scheme

- Provides income support for farmers and fishermen in receipt of long term social welfare payments, who in turn provide certain services of benefit to rural communities
- Open to farmers and fishermen only.



- 19hrs work per week in a farmer-friendly manner
- 142 participants on the SKDP Rural Social Scheme Dec 2107
- Reversal to the cuts in the qualifying criteria for farm assist will have more farmers qualify for the RSS
- Rate of payment for new participants - much lower than older participants



# South Kerry Development Partnership CLG.



- Work continued on a large number of community & voluntary projects in 2017. Work is on-going in 2018.
- RSS Scheme received 8 additional places in Spring 2018, Quota now 167.
- New Ratio of 1 Supervisors to 25 participants introduced in 2017



## • Categories of Projects

- Maintaining and enhancing way marked ways, agreed walks & bog roads
- Energy conservation work for the elderly and the less well off
- Village & Country Side Enhancement Projects
- Social care and care of the elderly, community care for both pre-school and after school groups
- Environmental maintenance work, Maintenance and care-taking of community and sporting facilities
- Projects relating to not for profit cultural & heritage centres
- Community Administration/Clerical duties
- Any other appropriate community project identified
- **Care of the elderly is a very large and important element of the work completed by RSS and Tus**

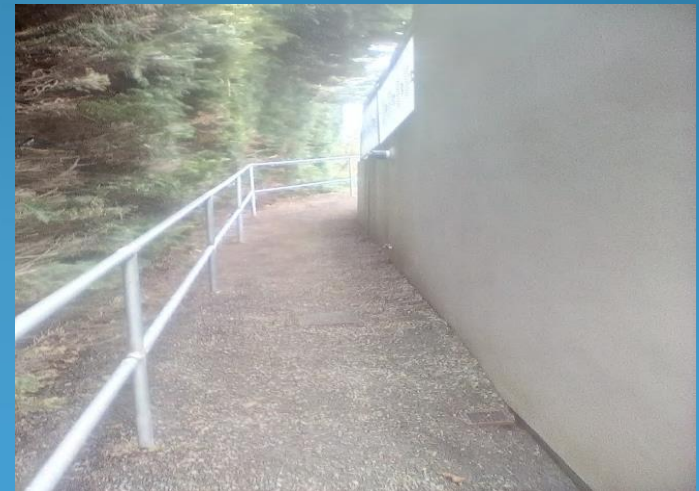




# South Kerry Development Partnership CLG.

## • Tús

- Aim is provide short term quality work opportunities for those who are unemployed and to provide certain services of benefit to communities
- Rural & Urban focus and built on the proven architecture of the Rural Social Scheme
- Eligible Work Categories - Environmental Services, Caring Services, General Community Services, Heritage & Cultural Services, Para-Educational Services
- More difficult to get Tus participants in Kenmare & Cahersiveen during 2017
- Referrals from the Random selection with in DEASP was very low in 2017. Referrals are now coming from the DEASP office in Limerick.
- Assisted self referral is very important





# *South Kerry Development Partnership CLG.*

<b>Dec 2017 – RSS &amp; Tus Summary</b>	<b>Cahersiveen</b>	<b>Mid Kerry</b>	<b>Killarney</b>	<b>Kenmare</b>	<b>Total</b>
<b>Number of community projects supported</b>	80	75	55	45	255
<b>Number of RSS Participants</b>	56	46	18	22	142
<b>Number of TUS Participants</b>	7	19	40	16	82
<b>Total Number of participants</b>	63	65	58	38	224
<b>Number of Supervisors</b>	4	3	3	2	12



*South Kerry Development Partnership CLG.*

# Rural Development (LEADER) Programme



## **Rural Development (LEADER) Programme 2014 - 2020**

- Community Development Supports Available
  - Grant aid of up to 75% - Max of €200,000 – Community Facilities & Equipment. Greater than €200,000 where no economic activity
  - Training - Grant Rates up to 100% - Max €200,00
  - Feasibility Studies, development plans - Grant rates up to 90% to a maximum of €30,000
  - Rural Development (LEADER) Funding can be matched by other public funding sources - up to a maximum of 95% of total project costs
  - Contribution in kind is eligible as matching funding - Voluntary Labour, donations

## *Caherdaniel Playground*

*Development of State-of-the-Art Community Children's Playground in Caherdaniel Village*

Total Project Cost: €145,349.35 Grant Aid: €109,012.01



## Cahersiveen Festival of Music & The Arts

*Programming Costs (The Irish National Opera Orchestra) & Purchase of Equipment (Crowd Control Barriers) for running of Festival*

Total Project Cost: €23,256.03 Grant Aid: €17,442.02





*South Kerry Development Partnership CLG.*

# **Social Inclusion & Community Activation Programme (SICAP)**



# South Kerry Development Partnership CLG.

- Community Development Actions - SICAP
- Men's Shed
  - Network meetings, bi-annual cluster with IMSA
  - Advice & assistance - Organisational Development, funding, links with other agencies



## Migrant Communities

- Failte Isteach - English language Conversation Programme continues
- Voter Rights Workshop with Immigrant Council of Ireland



# *South Kerry Development Partnership CLG.*

## Community Development Actions - SICAP

### Disadvantaged Rural & Urban Communities

- Supports for Local Authority Housing Estates – Residents Associations .
- Interagency group in Ballyspillane completed 3 year plan to support the estate
- Planning for Real<sup>®</sup> carried out with An Bhainseach Residents & funding given towards open day.
- New Women's Group set up in Killarney
- Network meetings, general support and highlighting funding opportunities for groups.





# South Kerry Development Partnership CLG.

## Kerry Social Farming 2017-2018 :

### Expansion

- Since last years AGM, the project has grown from 12 host farms to 19 host farms supporting over 30 participants. Project growing in North Kerry

### Promotion

- Kerry Social Farming were invited to participate at the Project Ireland 2040 Event in Westport in May 2018 KSF part of a panel discussion with An Taoiseach Leo Varadkar and Minister Michael Ring



### Funding

- Contract Rollover by Dept. of Agriculture (Cedra Funding) - further 12 months to September 2019. Funding of €123,000 maintained

### Training

- Approval by UCC in July 2018 of a level 6 course - *Certificate in Care Support Practice in Social Farming.*



# *South Kerry Development Partnership CLG.*

THANK YOU