

South Kerry Development Partnership CLG



Iveragh Supervisors

Breda Keating	T 087 6593389	E bkeating@skdp.net
David O'Neill	T 087 9681520	E doneill@skdp.net
Concubhair Lyne	T 087 2601140	E clyne@skdp.net
Adrian Griffin	T 086 6019990	E agriffin@skdp.net



Tim Coffey, Eugene Dennehy, Frank Sugrue, Joe McCrohan RSS and Tús Manager, John Cronin and Jimmy O'Sullivan at the Waterville Lakes and River Trust, Waterville.

Waterville Lakes & River Trust: enhancing tourism by preserving local habitats

THE Waterville Lakes & River Trust is making a fundamental difference to the local environment and eco-tourism potential of the region. By replenishing fish stocks in rivers and lakes, the group not only produces an essential dividend in terms of habitat, but also brings the community together.

Its primary aim is to promote the angling experience in Waterville for locals and tourists, which is vital in terms of maintaining a vibrant recreational setting. By extension, this benefits tourism in the area with people from all over the world coming to experience the beauty of the region and staying in local hotels, B&Bs and guest houses; while also using the bars, restaurants and shops.

SKDP help this group in the running of a hatchery and habitat improvement for spawning fish. Waterville Lakes & River Trust member, Kevin O'Sullivan said it would be impossible to maintain what they do without the manpower provided by SKDP. The nature of this work requires a lot of input along riverbanks and lakes making them accessible to anglers.

Waterville Lakes & River Trust has worked in conjunction with SKDP for over 15 years in their efforts to promote local tourism and the economy. Help also comes from local people, which Kevin said is a further benefit to the group's objective of sustaining local vibrancy.

Best Wishes to South Kerry Development Partnership from

D GALVIN & SONS
BUILDERS PROVIDERS
SNEEM CO KERRY

• TIMBER • BUILDING ACCESSORIES
• STEEL • UNIQUE HANDMADE
GARDEN FURNITURE

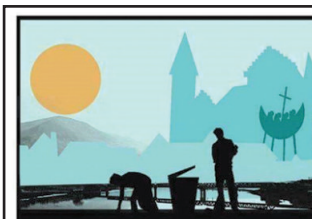
Tel: 064 6645118



Table & Seat Set



3 Seater Bench



**CAHERSIVEEN
TIDY TOWNS**

New Volunteers Always Welcome!

Cahersiveen Tidy Towns Committee would like to thank the Rural Social Scheme for its help and contribution in our tidy towns works and look forward to working in co-operation with the scheme well into the future



Milltown Childcare Centre

Appreciates the support and assistance provided by;

**SOUTH KERRY DEVELOPMENT PARTNERSHIP CLG
RURAL SOCIAL SCHEME & TÚS COMMUNITY WORK
PLACEMENT**



Best Wishes to
South Kerry Development Partnership from



TELEPHONE: (066) 9792924

WWW.SIGNANDPRINT.IE

Continued Success & Best Wishes to
SKDP GLC Rural Social Scheme and
TUS Community Work Placement from



Meeting all your Computing Solutions

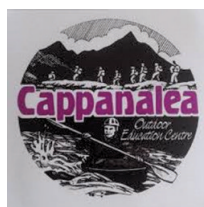
Continued Success & Best Wishes to
South Kerry Development Partnership from

**Michael Fenton & Sons Plant Hire
Castlecove, Co Kerry**

- Site works
- Land reclamation
- Land drainage

Contact: 087 6462181/087 2948594

CAPPANALEA OUTDOOR EDUCATION AND TRAINING CENTRE



would like to congratulate all the workers on the Rural Social Scheme and their co-ordinators with South Kerry Development Partnership who have greatly contributed to the success of the centre

**For Full Details on our Summer
Adventure Programmes**

Tel: 066 9769244 Email: info@cappanalea.ie
or visit: www.cappanalea.ie



Continued Success & Best Wishes to
South Kerry Development Partnership from



**After School Service
For Children with Disabilities
Beaufort Special Needs
Project Ltd**

9 & 10 The Paddocks
Ballydowney, Killarney, Co Kerry V93 H5NC

Email: homefromhomekillarney@gmail.com
Web: www.homefromhomeafterschoolservices.com
Tel: 087 4341166

South Kerry Development Partnership CLG

Cunamh Iveragh: an important facility in a rural location

CUNAMH Iveragh provide a vital service in south Kerry for people with intellectual disabilities of all ages. Given the geographic spread of south Kerry, this service is all the more essential. It was founded in the late-1990s by a group of locals eager to take matters into their own hands to provide a key facility.

This facility has taken a while to establish itself but once Cunamh – a group of no more than ten people – bought a house in Cahersiveen it went from strength to strength. They also provide an essential respite service, which is again thanks to the same core group of people.

Group Chairperson Bernie Donoghue said they are extremely proud of what they have accomplished, and she feels that without 'drive and determination', they would not be as advanced as they are in achieving their objectives. SKDP scheme members help Cunamh with the upkeep of the house by painting it and keeping it looking fresh. Bernie said this maintenance is very welcome, adding that SKDP is a great contact and resource to have.

"For a small group, what we have achieved is incredible. We are a very committed and focused group. We feel that if we don't do things ourselves, no one is going to do it for us. This is important when it comes to securing disability services," said Bernie. SKDP also provide drivers for the Cunamh Iveragh bus.



Aoife Murphy, John Cahill, Sindy Browne, David Cronin, Thomas Brace, Declan Curran, driver and Joe McCrohan at Cunamh Iveragh in Cahersiveen.

Keeping St Mary's GAA running smoothly...

ST Mary's GAA Club continues to serve as a vital part of everyday life for people of all ages in Cahersiveen and its environs. The club's presence in the community stretches back several decades, but not only has it produced some of the county's best footballers, it has also created no shortage of community cohesion during this time.

People connected with GAA clubs in every area – urban and rural – appreciate the sense of connectivity a club adds to a locality. Tony McCarthy of the St Mary's GAA Club said upkeep and maintenance of pitches and facilities is essential to the smooth running of the club, adding that SKDP RSS and Tús participants help immensely in this regard. "It is very important nowadays as it's hard to get people to do this work on a regular basis. Normally we would have two people involved in cutting the pitch and another three more help in lining it. They are very good and reliable participants that know what they're doing. They are a very important part of our club," Tony said.



Joe McCrohan RSS and Tús Manager (left) with Tony McCarthy St Mary's GAA Club and Paddy Sullivan at St Mary's GAA Club, Cahersiveen.

Continued Success & Best Wishes to
South Kerry Development Partnership
from



LEANES TOOL HIRE
WOODLANDS IND. ESTATE, KILLARNEY
TEL. 064-6631337
Email: hire@leanestoolhire.com • www.leanestoolhire.com

Main Agents for: **STIHL**

VIKING Blowers
Lawnmowers • Strimmers
Chainsaws • Hedge Cutters
Ride-on Lawnmowers
Luxury Toilets

FESTOOL Chainsaws • Strimmers
HITACHI Chainsaws • Strimmers
HITACHI Chainsaws • Strimmers

EVENT HIRE A SPECIALITY
Lighting Tower • Portaloos • Heaters
Generators • Fencing

Milltown/Castlemaine GAA Club

Wish Continued Success to
South Kerry Development Partnership

South Kerry Development Partnership CLG

Cahersiveen Music Festival hits all the right notes...

FEW success stories are as positive as the Cahersiveen Music Festival, which has gained unprecedented popularity year-on-year with locals and visitors alike as it looks forward to its 24th year in existence. Accommodation is at a premium and footfall has increased twofold over the years as revellers enjoy a unique festival that celebrates music and arts.

The Chairman of Cahersiveen Music Festival, Hugh Horgan, is keen to accentuate the role played by participants under the Rural Social Scheme. As the festival has grown, so too has the assistance of SKDP in providing the kind of help a developing festival requires.

"I couldn't stress enough how important SKDP RSS and Tús participants are to the success of this festival," said Hugh.

What started out as a humble festival is today a professional one in every sense. It costs somewhere in the region of €86,000 to run, while it creates roughly €2.4 million for the local economy every year – an incredible contribution in a rural town.

Hugh explains that erecting stages at the festival is a sizable undertaking that is done by participants under the Rural Social Scheme. They are also on hand throughout the festival to carry out jobs that are fundamental to the smooth running of the festival.

"There is never a problem when help is asked for and it wouldn't happen without the involvement of a hardworking committee and the input of SKDP. The latter play a pivotal part in the running of this festival," said Hugh.



Ann Landers, Breda O'Shea, Hugh Horgan Chairman and Joe McCrohan RSS and Tús Manager at the Cahersiveen Music Festival headquarters in Cahersiveen.

Kenmare Marketing & Events Group: an active and focus-driven body

THE Kenmare Marketing & Events Group has made significant progress in the way local festivals and social events are organised in Kenmare. The group is responsible for running events, encouraging tourism and marketing in Kenmare both nationally and internationally.

They also run the successful Halloween Howl Festival, Ring of Beara Cycle and Kenmare Bastille Day. Kenmare Marketing & Events Group also support a wide range of local groups that are working to promote the community.

Helen McDwyer of Kenmare Marketing & Events Group said the benefits of running large-scale events in the town is successful on many levels.

"Our remit is to encourage even more new events and to grow the ones we're responsible for. SKDP is crucial to small commu-

nities in this regard," said Helen.

"They have helped us put together our brand and also with funding and promoting our festivals. Our Halloween festival was very tough to get started for the first few years, but to have the backing of SKDP was vital. To be honest, the festival wouldn't be here without that help. One of the strengths of Leader Funding is that it's always grassroots focused," she added.

Kenmare Marketing & Events Group continue to prosper because of its interaction with local business members and traders. Moreover, an active membership contributes towards a vibrant Chamber. This 'community collaboration' combines to produce a strong product and economic dividend for Kenmare and its hinterlands.

Continued Success & Best Wishes to

South Kerry Development Partnership

Holy Cross Cemetery are pleased to be associated with SKDP in the work they carry out through the RSS in Kenmare. This work is invaluable to the maintenance of the cemetery

Well done to all concerned.

Best Wishes to South Kerry Development Partnership from



Listry GAA Club

Best Wishes to South Kerry Development Partnership from

QUIRKES HOMEVALUE CENTRE

Deelis, Cahersiveen, Co Kerry

Builders Providers and Homeware Suppliers
Home Delivery Service

Unmatched Range in South Kerry at very competitive prices
Quirk's Homevalue Cahersiveen

"Driving Value Home"

www.quirkeshomevalue.ie

Contact us at: 066 947 2087 • Email: info@quirkes.com

Best Wishes to South Kerry Development Partnership from

Seaview, Sneem, Co Kerry

Tel: 087 149 50 20

Email: sneemwelfare@gmail.com

Delighted to be associated with South Kerry
Development Partnership in numerous projects
in the Sneem area throughout the years

Best Wishes to South Kerry Development Partnership from

Seaview, Sneem, Co Kerry

Tel: 087 149 50 20

Email: sneemwelfare@gmail.com

Unmatched Range in South Kerry at very competitive prices
Quirk's Homevalue Cahersiveen

"Driving Value Home"

www.quirkeshomevalue.ie

Contact us at: 066 947 2087 • Email: info@quirkes.com

Best Wishes to South Kerry Development Partnership from

Seaview, Sneem, Co Kerry

Tel: 087 149 50 20

Email: sneemwelfare@gmail.com

Unmatched Range in South Kerry at very competitive prices
Quirk's Homevalue Cahersiveen

"Driving Value Home"

www.quirkeshomevalue.ie

Contact us at: 066 947 2087 • Email: info@quirkes.com

South Kerry Development Partnership CLG

Keeping The Kerry Way a step ahead...

THE Kerry Way is a gem in south Kerry that is something to be proud of for everyone associated with it. Thanks to the RSS and Tús participants in upgrading and monitoring the special route, it continues to thrive as a matchless amenity that takes in some of the most breathtaking scenery in Ireland.

Sean O'Suilleabhain has devoted his life to pursuing the joys of the great outdoors and helping to preserve and make possible walks that incorporate folklore, history and nature. Sean created the concept of The Kerry Way, which today is a walking trail incorporating and conserving ancient highways, rural development and nature landscapes.

Consisting of over 200km, it goes without saying that it requires a great deal of attention and care to maintain The Kerry Way. Many volunteers and local landowners also play a part in this story – a story everyone in Kerry can be proud of.

"The RSS and Tús participants are very important," said Sean O'Suilleabhain. "With the assistance of SKDP we are able to carry out major work along the route, which all helps to keep The Kerryway open. This coordinated effort, including from local landowners, is vital to its preservation."



Paddy Casey, Traloch Sweeney, Nicola O'Shea, and Daniel O'Sullivan with Joe McCrohan RSS and Tús Manager on The Kerry Way at Teermoyle, Foilmore.

Portmagee Community Centre a hub in the locality...

THERE is no greater example of social cohesion in motion than by observing the positive impact generated from a thriving community centre. Portmagee is a case in point where the community centre acts as a hub for people of all ages. It's estimated that residents from around 230 houses in the locality benefit from using Portmagee Community Centre.

"This is the hub of our community and everything evolves around it," said Mary Grandfield, Secretary of Portmagee Community Centre. "It is utilised seven-days-a-week for every kind of event from Keep Fit classes, to Youth Club activities in the winter."

It is a very active day centre that caters for over 100 dinners a week and a busy laundry service. There are eight people on the committee and numerous volunteers that give their time freely for the good of the centre.

"There are so many people involved, which is very encouraging. Through SKDP's assistance, Portmagee Community Centre has a well organised administrative side to it, including maintenance and upkeep of the hall. The focus on caring for older and disadvantaged people is very strong in Portmagee Community Centre."



Breda Keating, Anna Kennedy, Marian Martin, Joe McCrohan RSS and Tús Manager, Kerry Courtney and John Murphy of the Portmagee Community Centre.

Best Wishes to South Kerry Development Partnership from

BEAUFORT GAA CLUB
Lios an Phuca
beaumontgaaclub.com

- Boys and Girls teams: Under 6 to senior
- Gym and walking track • Lotto every two weeks.

<http://www.beaufortgaaclub.com>
G.A.A. Healthy Club Project Participant

Best Wishes to South Kerry Development Partnership from

POC ENGINEERING LTD.
ALL TYPES OF
METAL
FABRICATION

Mild Steel • Aluminium & Stainless Welding
Shot Blasting • Metal Arc & Spray Painting

T: 087 3294334 Bahaghs, Cahersiveen, Co. Kerry

Best Wishes to South Kerry Partnership from

HS
Highway Safety Developments Ltd.

Manufacturers & suppliers of:-

- Road Signs to CE Certification
- Outdoor Recycled Plastic Furniture
- Walking Man Posts etc

Knocktopher, Co. Kilkenny,
R95 TW 83

056-7768702
www.hsd.ie

South Kerry Development Partnership CLG



Paul Duff, Brian Morgan, Joe McCrohan RSS and Tús Manager and Lucian Horvat at Valentia Lighthouse.

Valentia Light House a beacon for growth on the island...

THIS wonderful initiative started in 2012 with the help of Kerry County Council and South Kerry Development Partnership. In its first season it managed to attract 3,000 visitors but by the close of the 2018 season this rose to over 15,000 visitors to Valentia Light House.

It is run under the remit of Valentia Island Development Company (VIDC) - a voluntary company set up to help grow and sustain tourism and key infrastructure on Valentia Island. A key component of this vision has been the opening of the historic light house, which is included in the Great Light Houses of Ireland (GLI).

In 2018 a grant aid of €90,000 was awarded by Fáilte Ireland

which will enhance the visitor experience even more. SKDP supply the light house with onsite tour guides and Concubhair Lyne who is a programme Supervisor with South Kerry Development Partnership. The project always aspired to being a self-sustainable social enterprise within 10 years, offering employment opportunity locally and without SKDP's support this would not have been possible.

"Part of the VIDC's objective is to try and create jobs. This year we've managed to create a full-time manager's job at the light house. Going forward the aim would be to create at least another three jobs. On an island of just 600 people this is to be welcomed," said Brian Morgan.

Living Alone?
CARE LINK

Getting emergency help at home isn't always possible...but with a **Care-Link™ Pendant Alarm**, one press of a button will connect you to our control centre & bring help to you quickly

Grants available for over 65s. Contact us for further details. Tel 01 8435889 | www.taskltd.ie

Learn about the people and the technology that have guided ships safely throughout the years...

Visit Valentia Island Lighthouse

Open 7 days / week 10:30 - 18:00
Valentia Island, Co. Kerry
Call 066 947 69 85 for more information

Best Wishes to South Kerry Development Partnership

BALLYHAR DYNAMOS FC
ESTABLISHED 1975

Best wishes to South Kerry Development Partnership from

PORTMAGEE DEVELOPMENT GROUP CLG

"Looking forward to working with South Kerry Development Partnership in the future."

Best Wishes to South Kerry Development Partnership from

The Cahersiveen Festival of Music & The Arts

**August 2nd, 3rd & 4th
Bank Holiday Weekend**





South Kerry Development Partnership CLG

Community groups availing of RSS and Tús participants 2019

KILLORGLIN COMMUNITY GROUPS

1. Annascaul GAA
2. Parents' Association, Bhreac Cluainn NS, Annascaul
3. Annascaul Walking Festival Committee
4. Annascaul Parish Buildings
5. Parents' Association, St. Joseph's NS, Castlemaine
6. Inch Community Council
7. Keel Community Centre
8. Keel GAA
9. Old Keel Graveyard
10. Nai Ionad Na Cille Ltd Keel Childcare Facility
11. Keel Up Hill / Down Hill Loop Walk
12. Castlemaine Community Services
13. Castlemaine Tidy Towns
14. Castlemaine Family Resource Centre
15. Milltown / Listry Parish Buildings Committee
16. Milltown / Castlemaine GAA
17. Milltown Tidy Towns
18. Nagle Rice Community Centre Milltown
19. An Tuirin Lin Residents Association Milltown
20. Naiolann Solais Milltown Childcare Facility
21. Ballyfinnane Community Centre
22. Ballyfinnane Primary School
23. Ardmoniel / Dromavalla Graveyard Committee Killorglin
24. Killorglin Tidy Towns
25. Scamps & Scholars Childcare Facility Killorglin
26. Cuman Holy Well Glenbeigh
27. Kerry Way Committee
28. Glenbeigh & Glencar GAA Club
29. Glencar Graveyards Committee
30. Laune Rangers GAA Club
31. Cappanalea OEC
32. Dragons Den Community Sports Complex Ltd
33. An Bhainseach Residents Association
34. Glenbeigh Sports Hall
35. Glenbeigh Glencar GAA
36. Parents' Association, Castledrum N.S., Keel
37. Killorglin Cycling Club
38. Puck Fair Ltd
39. Hardman Event
40. Glencar Community Care
41. St Vincent de Paul Society, Killorglin
42. Woman 2000, Killorglin
43. Cromane Community Field Committee
44. Cromane Community Council
45. Kilcolman Union of Parishes
46. Lickeen Field Development Association
47. Steelroe Residents' Association, Killorglin
48. Glencar Cattle Show Committee
49. Parents Association - Boheshil National School
50. Parents Association Curraheen NS

51. Parents Association- Realt Na Mara National School,
52. Parents Association Glenbeigh National School
53. Churchtown Graveyard Committee, Beaufort
54. Parents Association Scoil Mhuire Killorglin
55. Killorglin Parish Pastoral Council
56. Beaufort G.A.A
57. Castlemaine Harbour Association, Cromane
58. Iveragh Park Residents Association
59. St John of God's St Mary of The Angles Beaufort,
60. Laune Anglers Association
61. Killorglin Rugby Club
62. K Fest Committee Killorglin
63. Killorglin Neighbourhood Youth Project
64. McGillycuddy Reeks Mountain Access Forum
65. SKDP Killorglin,
66. Killorglin Archives Society
67. Killorglin Family Resource Centre
68. Castlemaine Soccer Club
69. Beaufort Tidy Towns
70. Beaufort Community Council
71. Black Valley National School Parents Association

CAHERSIVEEN COMMUNITY GROUPS

1. Waterville GAA
2. Foilmore GAA
3. Foilmore Community Centre,
4. Cahirciveen Social Services
5. Iveragh Branch Kerry Mental
6. Cunamh Iveragh
7. IRD Foilmore-Kells Co Ltd
8. Waterville IRD
9. Waterville Tidy Towns
10. Family Resource Centre
11. Reenard GAA
12. Foilmore National School
13. Aghatubrid National School
14. Cahirciveen Tidy Towns
15. Coars National School
16. Scoil Mhuire Boys School
17. Valentia Island Heritage Centre
18. St Marys GAA
19. Cahirciveen Graveyard Comittee
20. Citizens Information Service
21. Cahirciveen Pastrol Council
22. Cahirciveen Mens Shed
23. Ferta Drive Residence Association
24. Cahirciveen Trader Association
25. Riverview Residence Association
26. South Kerry Sports Centre
27. St Vincent De Paul
28. Sive Rowing Club
29. Cahirciveen Rowing Club
30. Over The Water Rowing Club
31. Piarsaigh No Dromoda
32. Cahirciveen Festival Committee
33. Woodbrook Residence Association
34. South Kerry Sports Complex
35. Board of Management Colaiste na |Sceilge

36. St Joseph National School
37. Cahirciveen Outdoor Club
38. Cahirciveen Playground committee
39. The Bog Roads Committee
40. Valentia Island Energy Co Op
41. Chapeltown Tidy Towns Committee
42. SKDP Agriculture working Group
43. South Kerry Beef Replacement Group
44. Ring of Kerry Quality Lamb Group
45. Derrynane Abbey Graveyard Committee
46. Friends of St Michaels Waterville
47. Ballinskeligs National School
48. Portmagee Development Group
49. Portmagee Social Services
50. Portmagee Community Centre
51. Skellig Rangers GAA
52. Tig An Oilean
53. Valentia Parish Council
54. Cracow Park & Leisure Development
55. Sencory Gardens
56. Valentia Graveyard Committee
57. Old St Johns Graveyard Valentia
58. Valentia Community Health & Welfare
59. Cahirciveen Active Retired
60. Kerry Community Transport
61. Cancer Care Group
62. Cahirciveen Women in Agriculture
63. SKDP
64. South Kerry Guidance Network
65. Bray Head Loop Walk
66. Ballinskellig Inshore Rescue
67. Coiste Forbartha Na Sceilge
68. Valentia Island Development Group
69. Sceilg Kerry
70. Waterville Lakes and River Trust
71. The Glen National School Parent Association
72. Knockeen Rowing Club
73. Dromid Graveyard Committee
74. Waterville National School
75. Portmagee Walkers Group
76. Rural Mens Group
77. Cumann Daibhre
78. Valentia GAA
79. Church of Ireland Knightstown
80. Valenta Island Community Centre
81. Abbeyplace Residents Association
82. Saidbhin Care parents Association
83. The Glen Community care
84. Scoile Saidbhin parents Association
85. Ferta View Day care Centre
86. Valentia GAA

KENMARE COMMUNITY GROUPS

1. Blackwater Women's Group
2. Bonane Community Co-Op Society Ltd.
3. Care of The Elderly
4. Carnegie Arts Centre
5. Citizen Information Centre
6. Coad & Derrynane Graveyards
7. Dawros Community Centre
8. Inter Kenmare Soccer Club
9. Kenmare Marketing And Events Group
10. Kenmare Community Care (Taobh Linn)
11. Kenmare Family Resource Centre
12. Kenmare New Graveyard
13. Blackwater Development Group
14. Kilgarvan Tidy Towns

15. Killowen Graveyard
16. Kilmackilloge Cemetery Committee
17. Lauragh Community Centre Committee
18. Lauragh N.S. Parent Association
19. Lauragh Tidy Towns
20. Lodge Wood Residents, Kenmare
21. Old Kenmare Graveyard Association
22. Sneem digital Hub
23. Sneem Rowing Club
24. Sneem Welfare Family resource centre.
25. Tahilla N.S. Parent Association
26. Templenoe Community Centre
27. Templenoe Community Council
28. Templenoe GAA Club
29. Templenoe Graveyards
30. The Kerry Way
31. Tuosist GAA Club
32. Tuosist N.S. Parent Association
33. Derrynane Inshore Rescue Committee.
34. Coiste Pobal CathairDónall.
35. Kingdom Cat and Dog Rescue
36. Kenmare new cemetery

KILLARNEY COMMUNITY GROUPS

1. Anabla National School Parent Association
2. Barraduff Tidy Village
3. Killarney Community Services
4. Fossa Development Association
5. Select Vestry of Killarney
6. Listry Community Council
7. Listry GAA
8. Ballyhar Dynamos
9. Gap Valley Group
10. Home from Home
11. Killarney AFC
12. Gneeveguilla GAA
13. St Vincent DePaul
14. Glenflesk GAA
15. Muckcross Abbey Mass Association
16. Spa GAA
17. Killarney Mountaineering Club
18. Killarney Athletic Club
19. Kerry Mental Health
20. Killarney Men's Shed
21. Killarney Asylum Support Initiative
22. Ballyspillane Family Resource Centre
23. Killarney Rugby Club
24. Killarney Celtic Football Club
25. Chime
26. Barraduff Community Field
27. Kerry Parents & Friends Association
28. St. John of Gods Kerry Services
29. Kerry Down Syndrome
30. Fossa National School Parent Association
31. Glenflesk National School Parent Association
32. Killarney Adult Lit Volunteer Tutor Support Group
33. Be Aware Prevention Suicide
34. Fossa Community Centre
35. Community History & Achieves Committee
36. KDYS
37. Football For All
38. Ballydribbeen Residents Association
39. Kerry Social Farming
40. Killarney Mountain Festival
41. Barraduff Mens Shed