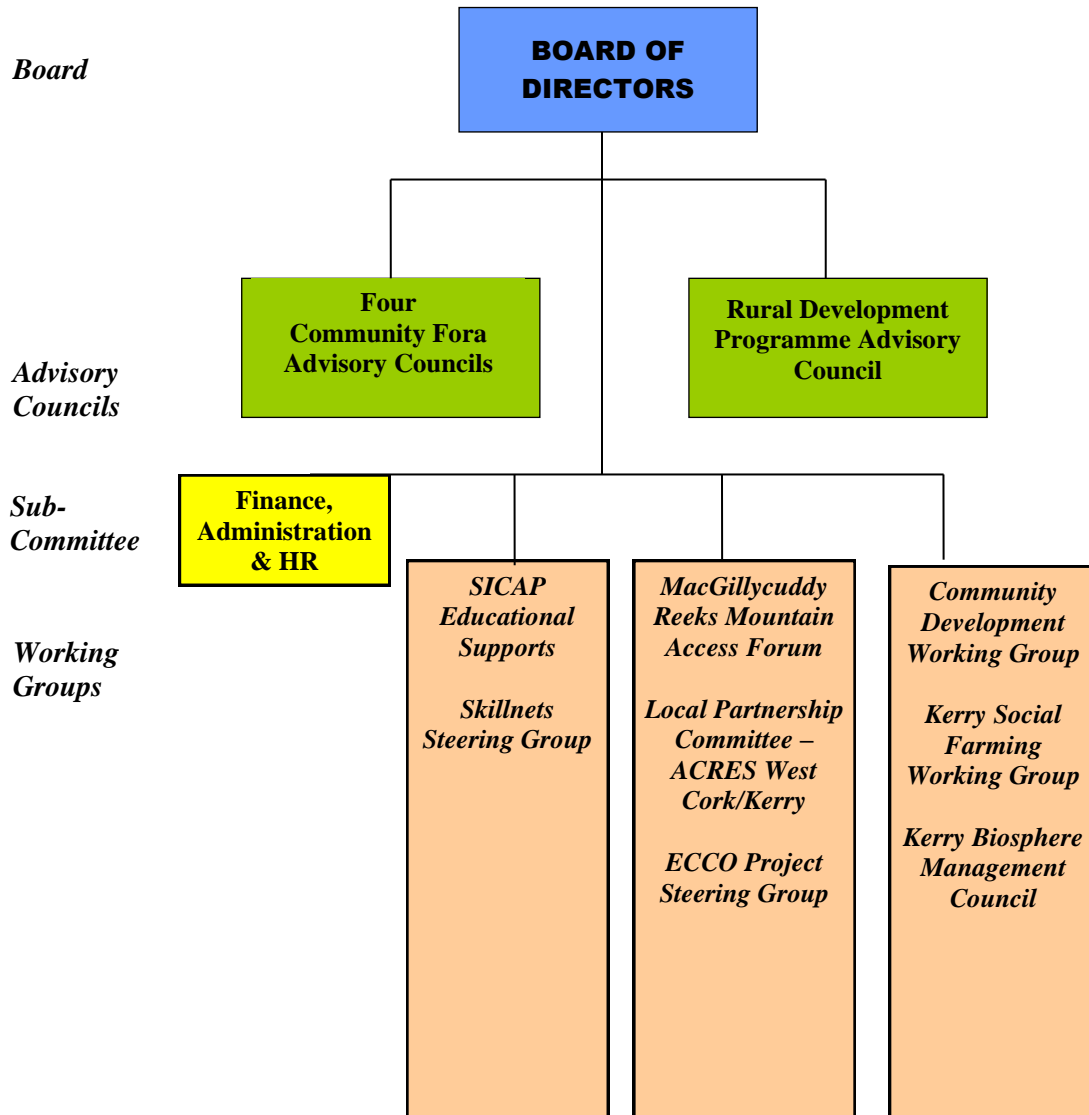


SKDP Company Sub-Structures



SKDP COMPANY SUB-STRUCTURES

1. **Rural Development Programme Advisory Council (LEADER Evaluation Committee)** - To undertake a detailed evaluation of project applications received by South Kerry Development Partnership CLG under the Rural Development (LEADER) Programme 2014-2022 & make funding recommendations to the Kerry LAG. In recommending a project for funding to the Kerry LAG, the SKDP Evaluation Committee will be entitled to specify the rate of aid, the maximum grant ceiling and any conditions the Evaluation Committee agree should attach to the project.
2. **Community For a Advisory Councils** – The Community For a Advisory Councils are all PPN registered Groups in each of the Four Community Fora Areas of South Kerry. They are Greater Kenmare, Iveragh, Greater Killarney & Mid Kerry-Sliabh Mish. The advisory councils provide a forum through which SKDP can channel information to communities. They also elect the Community Directors to the Board of SKDP for each of the Forum areas
3. **Finance, Administration & HR Sub-Committee** - To monitor and review SKDP Budgets, financial & administrative/operational procedures of South Kerry Development Partnership and recommend changes where appropriate to the Board of South Kerry Development Partnership CLG. To monitor compliance

by South Kerry Development Partnership CLG with public funding requirements and the conditions of grant funding imposed by its funding providers and sanction any appropriate corrective action that may be required. To receive and consider the findings of all audit reports conducted by external funding agencies/bodies on the financial/ administrative procedures of and expenditure declared by the South Kerry Development Partnership CLG.

To consider all HR matters including changes to existing employment contracts, updates/amendments to SKDP HR policies & procedures etc. However all staff appointments and staff salary levels will continue to require the approval of the Board of South Kerry Development Partnership CLG.

- 4. Community Development Working Group** - Role is to inform the development of and oversee the implementation of the Community Development strategic objectives and actions of South Kerry Development Partnership CLG. To have oversight and coordination of all community development actions and interventions (both within and across relevant SKDP programmes – such as RSS, TUS, SICAP –Goal 1 & Rural Development (LEADER) Programme -Community elements) of South Kerry Development Partnership CLG.
- 5. SICAP Educational Supports Working Group** - Role is to inform the development of and oversee the implementation of the SKDP Social Inclusion & Community Activation Programme’s Education actions in South Kerry. To inform the development of annual work-plans for the implementation of the South Kerry Development Partnership’s SICAP Educational supports. To ensure that SKDP interventions/actions to address educational inequality & disadvantage in South Kerry are based on sound community development approaches, appropriate to the area and meet the needs of the target groups.
- 6. South Kerry Skillnet Steering Group** –To Provide the strategic direction and control for the South Kerry Skillnet Training network and oversee & monitor network performance. Review and approve the development strategy for the network. Advise, Guide & Support the network manager in managing the network. Provide a link between SKDP and member companies. Ensure the network’s activities focus on the delivery of skills that meet defined skills shortages vital for growth and competitiveness in the sector/region.
- 7. Kerry Social Farming Working Group** - To provide strategic oversight & direction of the Kerry Social Farming project. To explore Social Farming opportunities to other cohorts who might benefit from social farming. To establish Kerry Social Farming in a sustainable manner so that it can continue to operate in the long term for the benefit of the Social Farm participants and host farmers. Liaise & cooperate with other Social farming initiatives in Ireland, including other Local Development Companies (LDCs) and Social Farming Ireland (SoFI) and across Europe to advance Social farming as a Social Inclusion and Rural Development project
- 8. MacGillycuddy Reeks Mountain Access Forum** - A representative management Forum to manage, protect and sustainably develop lands in the MacGillycuddy Reeks. The vision for the MacGillycuddy Reeks Mountain Access Project (MAP) is to create a suitably resourced upland recreational activity zone, focussed on hillwalking, climbing, mountaineering, environmental and cultural heritage, underpinned by permissive land access by the relevant landowners. The MAP will be delivered through a participative multi-stakeholder forum, to support the livelihoods of landowners and local enterprises, while providing an excellent experience for recreational users. The MacGillycuddy Reeks MAP will be the exemplar for sustainable uplands management and permissive recreational access in Ireland, based on an ethos of agricultural, social and environmental sustainability.

- 9. The Local Partnership Committee in the ACRES CP zone (Kerry/West Cork).** This group will be brought together to support the development of the Local Action Plan primarily. The Local Action Plan (LAP) shall mean the plan for each of the eight CP Zones, which will show inter alia a summary description, overall vision, and objectives for the CP Zone, in our case Kerry & West Cork. These stakeholders will have a broad range of expertise & local knowledge to develop the Local Action Plan & advise on different elements of the Project including hydrology, agriculture, ecology, habitats & species of concern relevant to the CP zone. (NPWS, LAWPRO, Farm Advisors, Local Authority representatives, the Local Development Companies, Birdwatch Ireland, Inland Fisheries Ireland, Vincent Wildlife Trust, Coillte and specialist advisors i.e. Evelyn Moorkens-list not exhaustive) The LPC will also identify actions, non-productive investments/NPI's (investments in tangible and intangible assets that contribute to achieving one or more of the specific objectives of the Scheme) and landscape measures which may support the objectives for the CP zone i.e. water provision infrastructure. After the Local Action Plan has been agreed by the LPC and screened by DAFM with key priorities & NPIs & landscape measures identified the LPC will then meet less frequently to update on progress and add any other priorities that may emerge in the CP Zone.
- 10. ECCO project Steering Group** - The ECCO project is an EU Interreg Renewable Energy Project. The aim of the SKDP project is to create a 'shovel ready' community owned renewable energy project in South Kerry. The role of the working group is to inform the development of and oversee the implementation of the EU Interreg E.C.C.O project in South Kerry, To inform the development of annual work-plans for the E.C.C.O. Project in South Kerry, To have oversight of and guide all E.C.C.O. Project actions and interventions of South Kerry Development Partnership CLG, To promote the project to communities, funders, policy makers and other external stakeholders etc. as appropriate, to review, and monitor project implementation and outcomes and support the Project management to identify and address any corrective/remedial actions required
- 11. Kerry Biosphere Management Council** - For the broader Kerry UNESCO Biosphere Reserve, SKDP, NPWS and Kerry County Council formed a Biosphere Management Council with the overall responsibility for management of the UNESCO Biosphere Reserve. This Council is responsible for the development and implementation of the management policy for the biosphere reserve and ensuring that all goals and objectives are met. A dedicated Kerry Biosphere Reserve Officer was appointed (Employed by SKDP) and reports to the Council. This Officer is responsible for implementing actions as set out by the Council. Killarney National Park will continue to be managed by the NPWS, as a National Park, with its primary purpose being the conservation of biodiversity